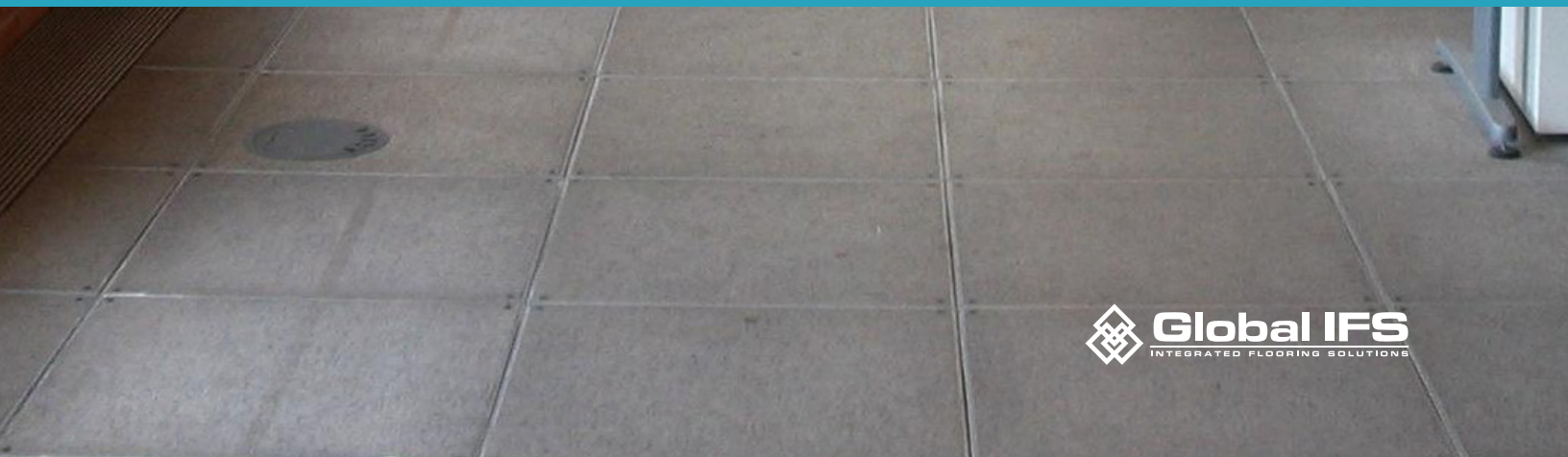




GLOBAL IFS[®]

Global Integrated Flooring Solutions is the leading provider of fully integrated, premium raised access flooring solutions for high-performing, state of the art environments in every building.





PROVEN SOLUTIONS FOR THE FUTURE

Raised access flooring (RAF) in combination with underfloor air distribution (UFAD) allows for a better tenant experience, energy efficiency, easier adaptability, and total cost savings.

The push for sustainability

In line with the global shift toward sustainability, building owners, developers and tenants alike are increasingly focused on energy efficiency and otherwise reducing their environmental footprint. More than 2.2 million sq. ft. of building space becomes LEED-certified every day.

Raised access flooring systems—and in particular UFAD systems—offer greater energy efficiency than traditional overhead systems, and can contribute points toward a LEED certification.

They can also help generate material and time savings during reconfigurations, enabling projects to be completed in about a third of the time, depending on construction type.

Cost savings

Adaptable raised access flooring solutions enable businesses to save costs throughout the building lifecycle. They are easy to install and adapt for new tenants—meaning lower costs of installation, renovation and replacement compared to overhead systems.

In a number of building designs, UFAD systems have shown increased energy savings of 20-30%.

Rapid change requires adaptability

Organizations need to be agile to thrive and grow—including the ability to quickly change their space to meet evolving needs, while ensuring optimal comfort and productivity for their employees.

Churn rates in corporate America continue to rise. Industry sources point to a median annual churn rate of about 45%, which can go as high as 200% for certain organizations.

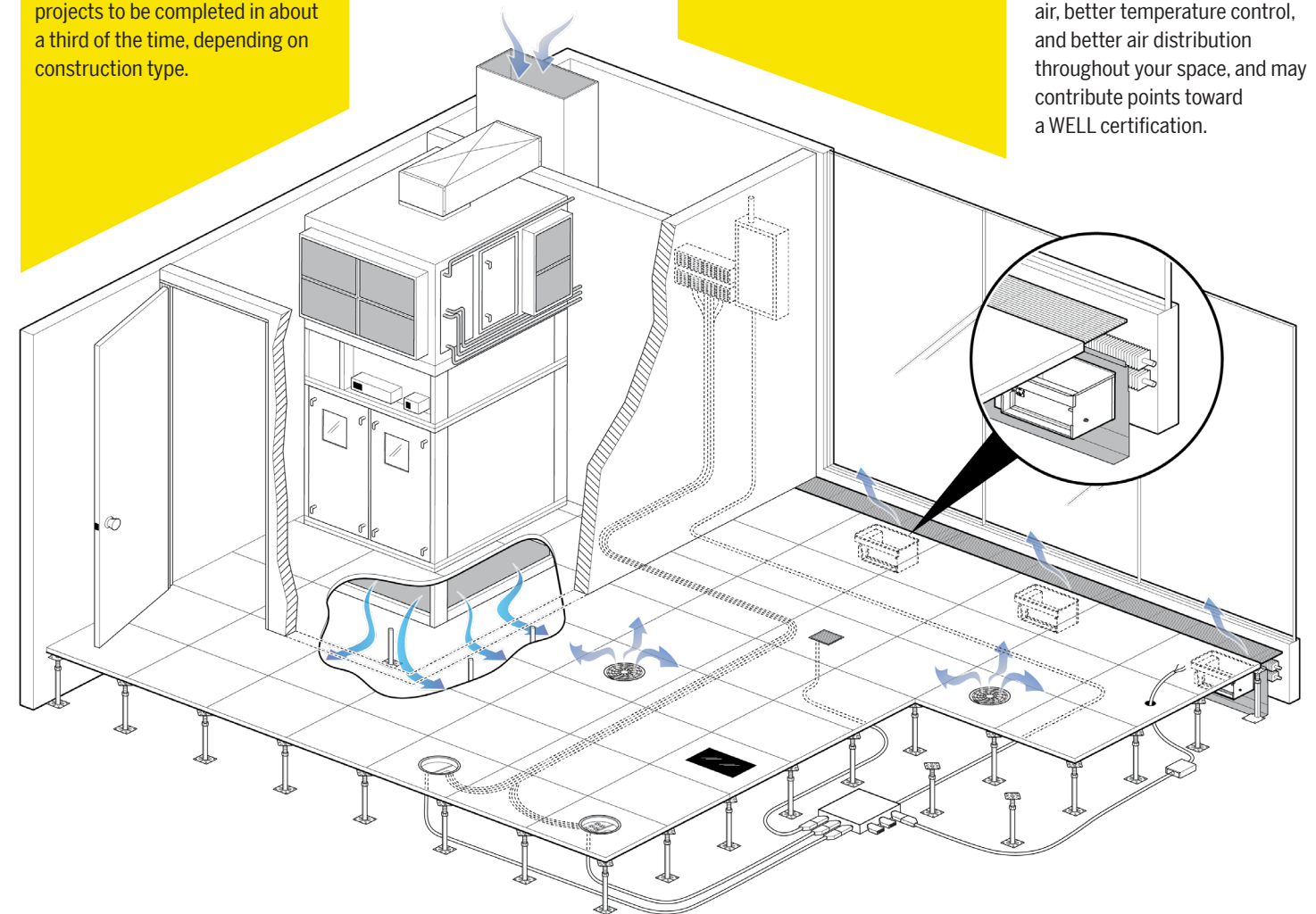
Raised access flooring in combination with modular power allows building owners and tenants to readily customize their environments to meet their needs.

Improved air quality and user experience

Studies and testimonials highlight that occupants in beautiful, highly adaptable environments with cleaner air are happier, healthier, and more productive. Improved indoor air quality has been shown to reduce employee absenteeism by 6%.

More than 4000 projects across 58 countries are applying WELL.

RAF systems can allow for cleaner aesthetics, increased vertical and horizontal space, and fewer visible mechanical elements compared to conventional overhead solutions. UFAD systems provide cleaner air, better temperature control, and better air distribution throughout your space, and may contribute points toward a WELL certification.



WORLD-CLASS SOLUTIONS FOR EXCEPTIONAL ENVIRONMENTS IN EVERY BUILDING

At Global IFS®, we're committed to creating versatile, beautifully designed building environments that are high-performing, built to last, and easy to install and manage.

Our fully integrated solutions, rooted in more than 30 years of proven expertise, are custom-tailored to meet and adapt to your changing needs—combining industry-leading and field-proven raised flooring with underfloor air distribution (UFAD), modular power, cable management, WiFi and unique finishes to create an environment that is truly exceptional, highly adaptable, and optimized for you.

Global IFS is headquartered in Kentwood, Michigan, with offices in Edison, New Jersey, and Toronto, Canada.

The company was created as a merger among TecCreate® Flooring and Manufacturing, Hi Tech Data Floors and Camino Modular Systems.



A SOLUTION FOR EVERY BUILDING



Low Profile Series

Ultra low profile flooring system with modular power and cable management.

Flex Series

Highly customizable solution that can include modular power, cable routing, WiFi, and more.



Integrated Series

Comprehensive solution that can provide all the benefits of the Flex Series in addition to UFAD and other underfloor systems.

ARE YOU READY TO MEET THE FUTURE?

We're committed to bringing the exceptional environments of the future to every building—today. Whether you're a developer, architect or engineer, and whether or not you're familiar with raised access flooring, we'll work collaboratively with your team to meet your particular needs and budget, and to deliver the solution that's ideal for your particular building.

Interested in learning more?

Contact us: solutions@globalifs.com